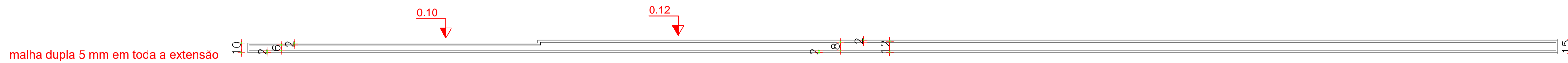
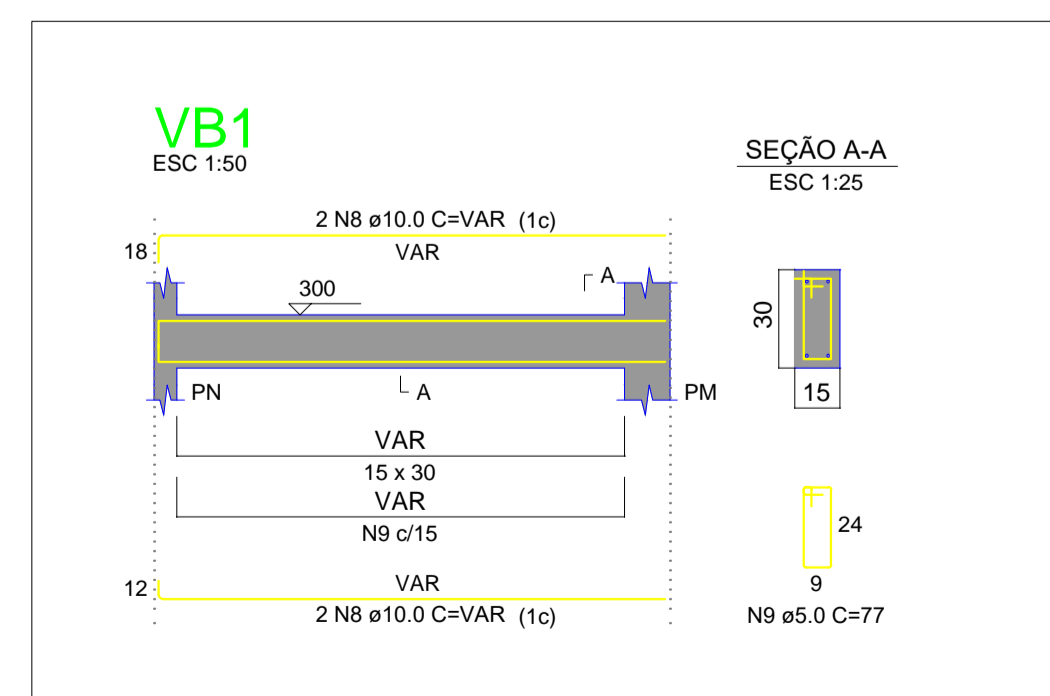
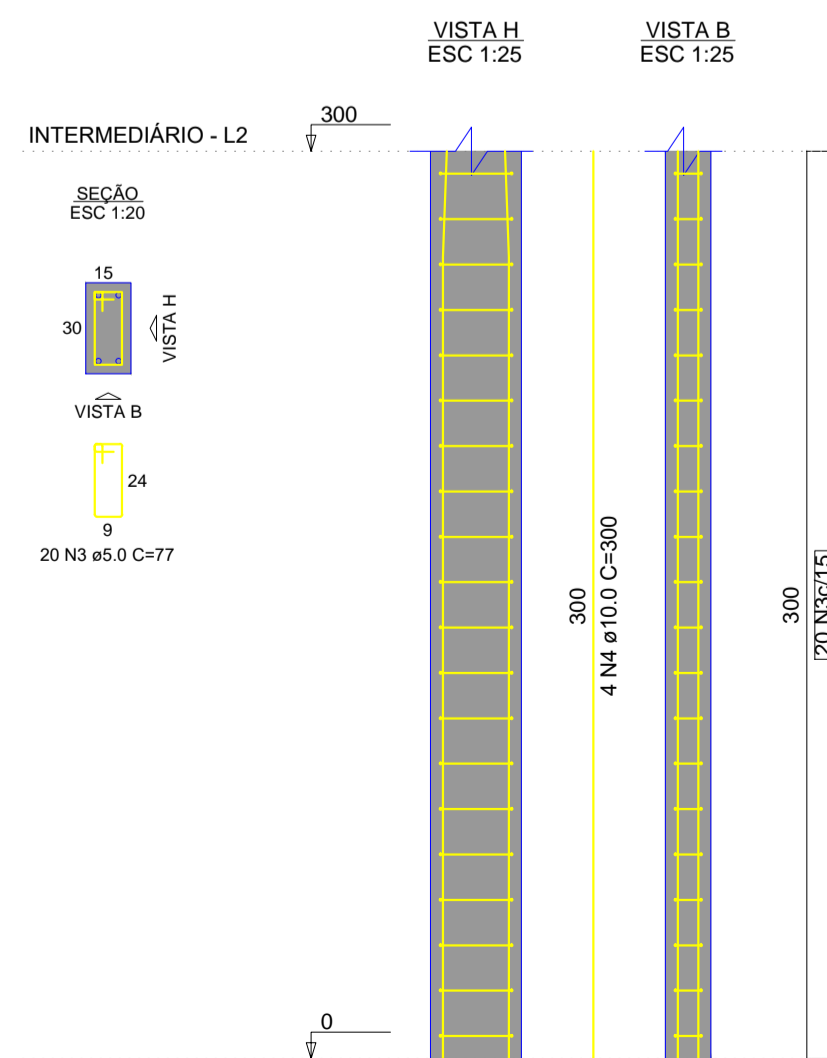


Forma do pavimento Terreo

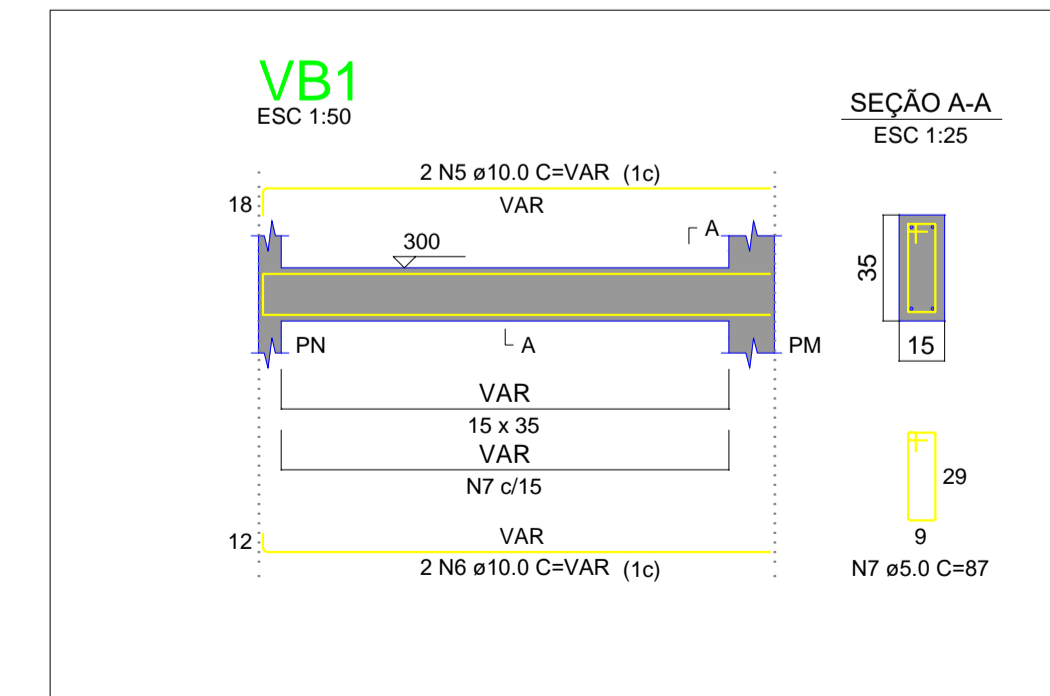
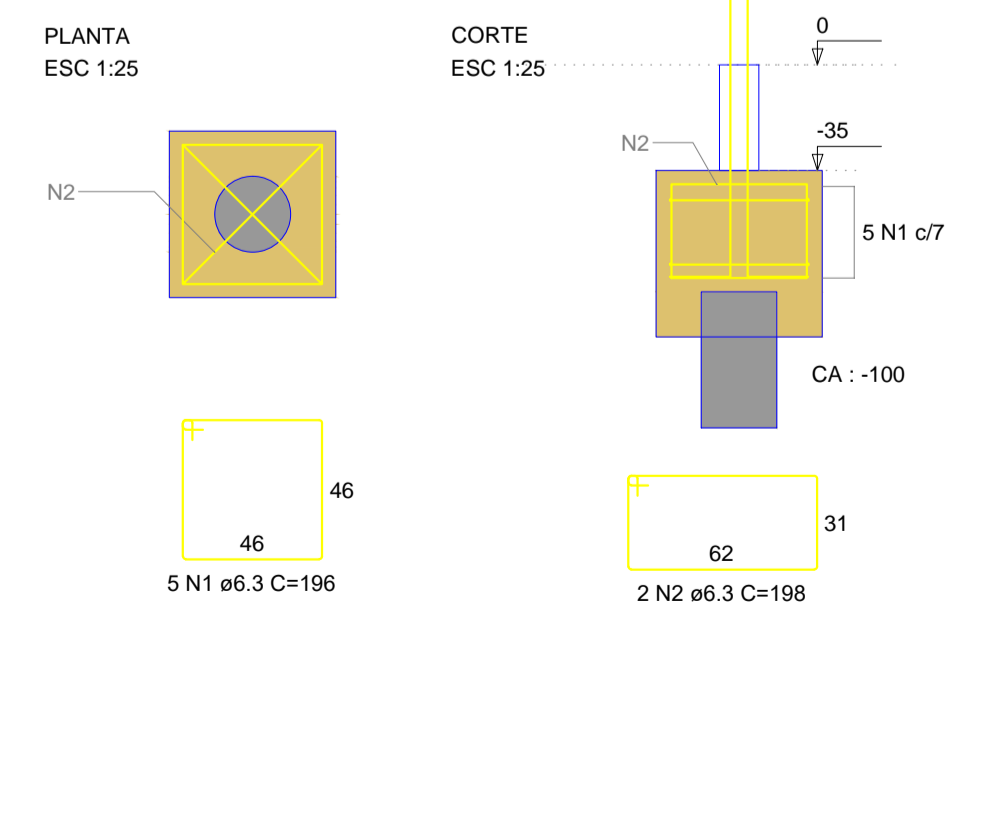
escala 1:50

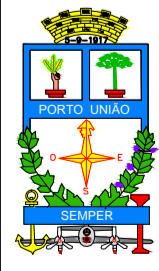


PILARES



BLOCOS DE FUNDAÇÃO



 PREFEITURA MUNICIPAL DE PORTO UNIÃO - SC		
OBRA: AMPLIAÇÃO DO NÚCLEO EDUCACIONAL JOÃO FERNANDO SOBRAL		
LOCAL DA OBRA: Rua Helmuth Muller, 1908 - Jardim Bela Vista, Porto União - SC		
RESPONSÁVEL TÉCNICO DE PROJETOS: VINICIUS ANDRÉ MAKIAK Engenheiro Civil CREA - SC 119380-1	PROJETO: ESTRUTURAL	FOLHA: 01
RESPONSÁVEL TÉCNICO DE PROJETOS:	MUNICÍPIO: Porto União	ESTADO: Santa Catarina
DATA: Setembro/2021	DESENHO:	ESCALA: indicada
ÁREA TOTAL: 262,00 m²		