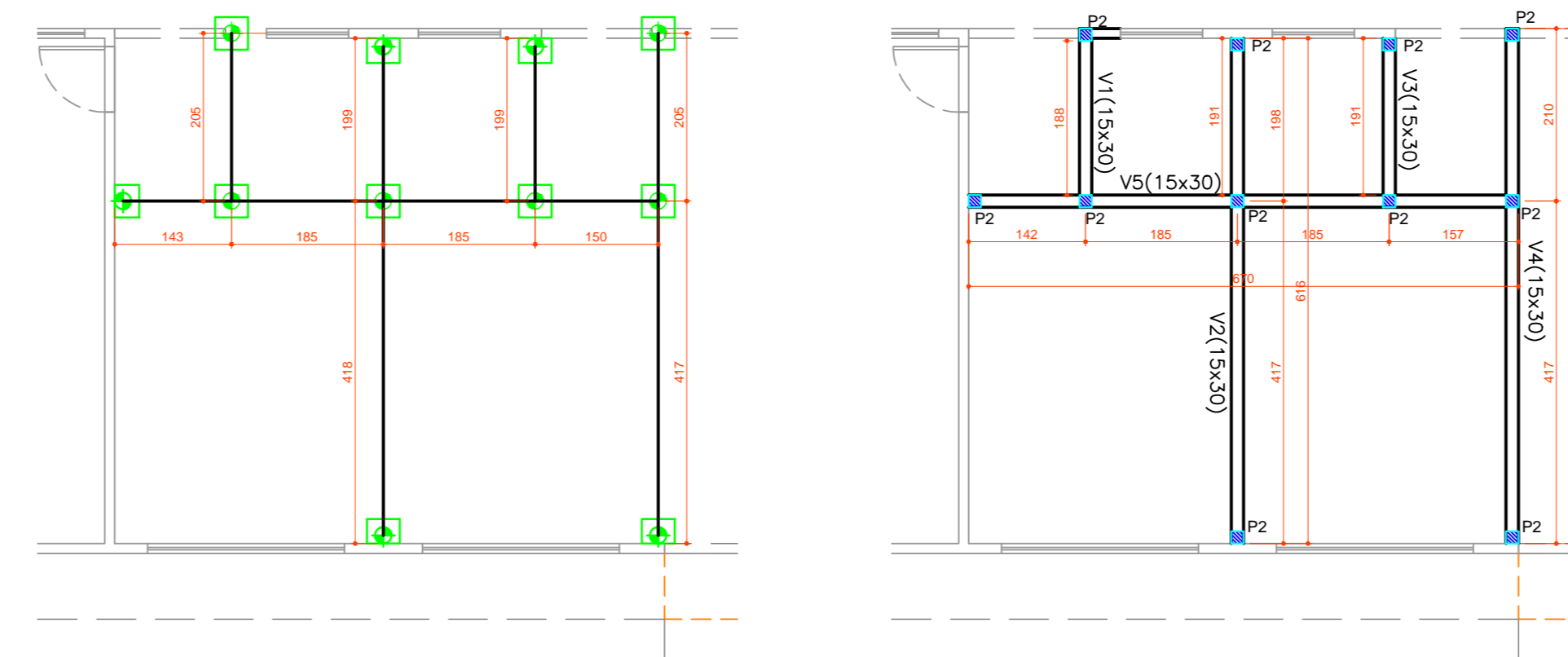
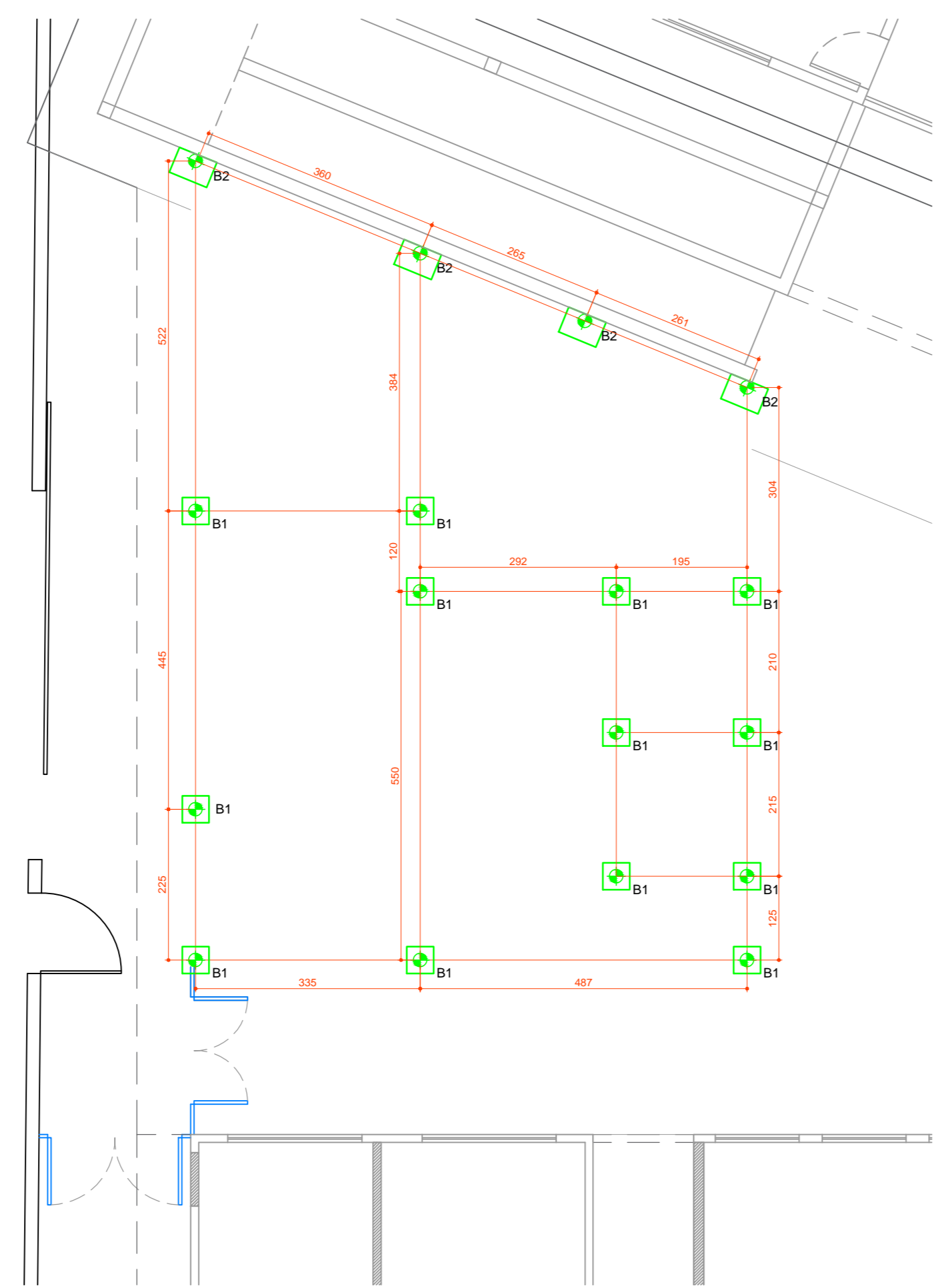
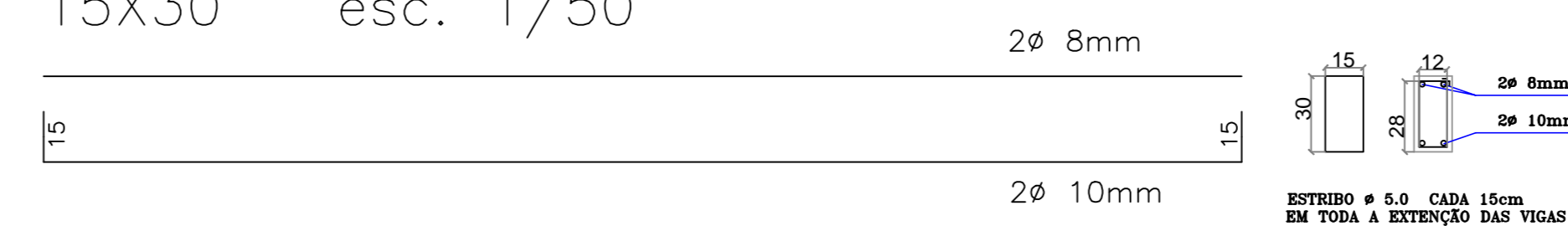


PLANTA ESTRUTURAL BLOCO NOVO
ESCALA 1/75

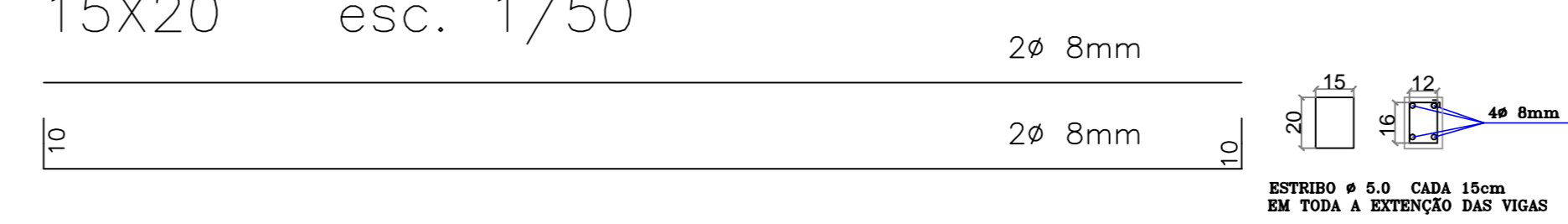


PLANTA ESTRUTURAL BANHEIROS
ESCALA 1/75

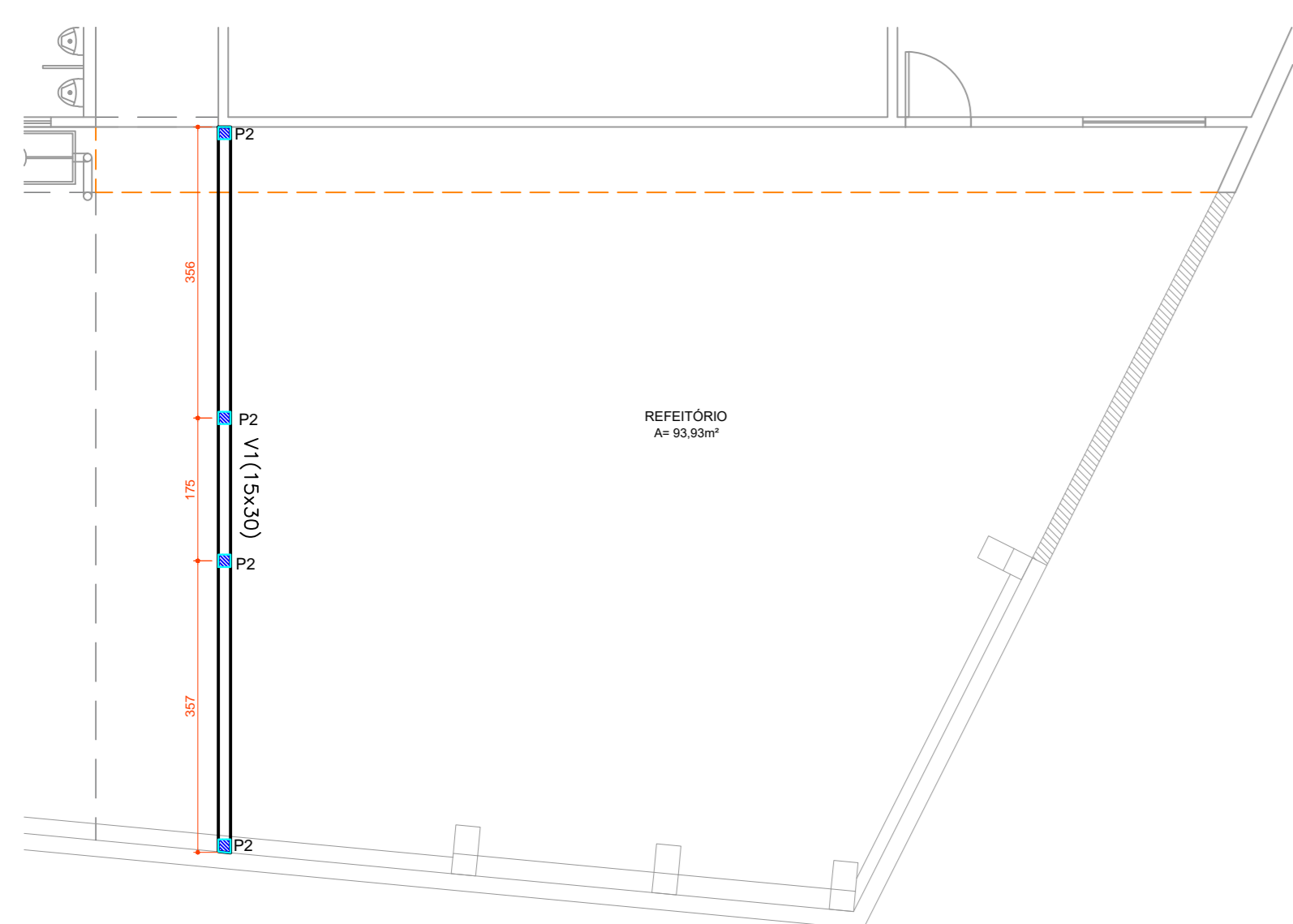
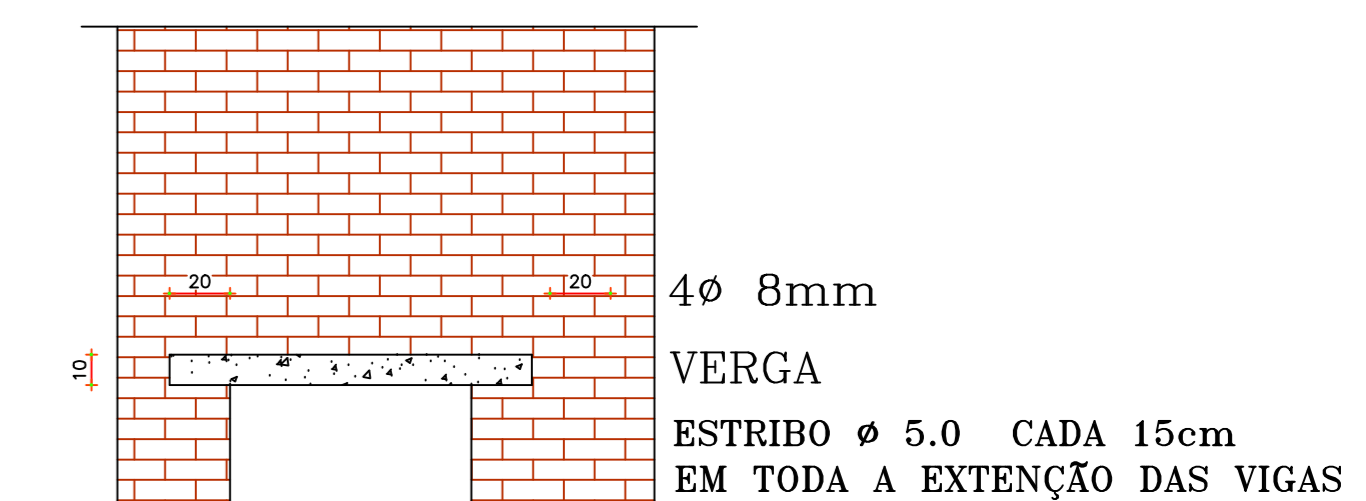
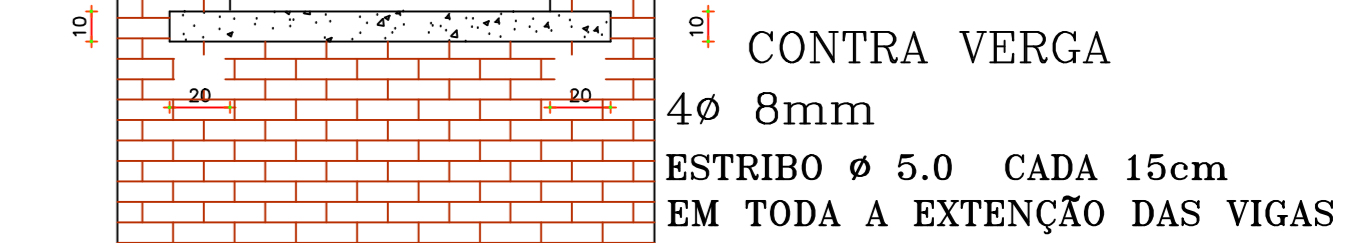
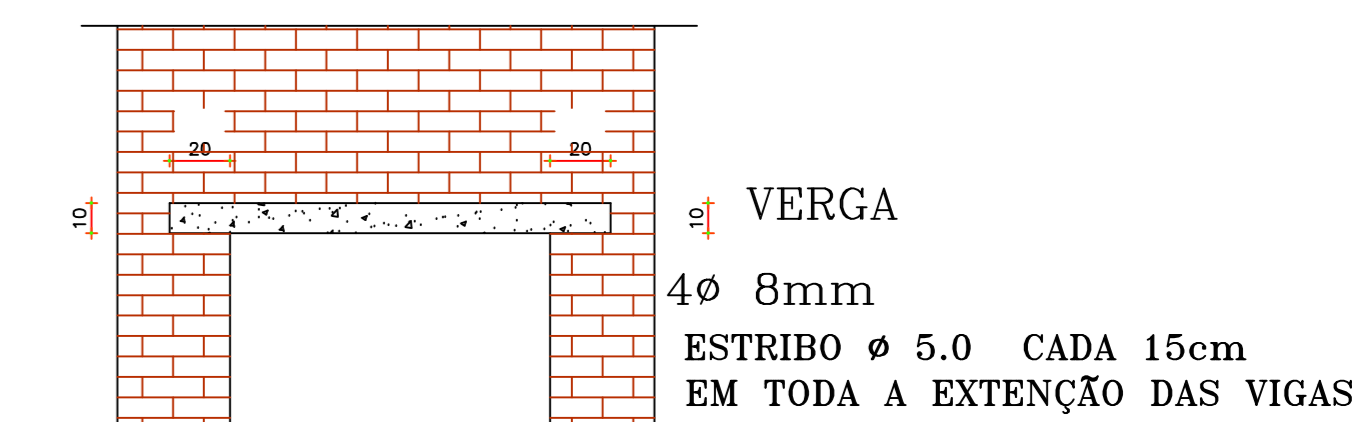
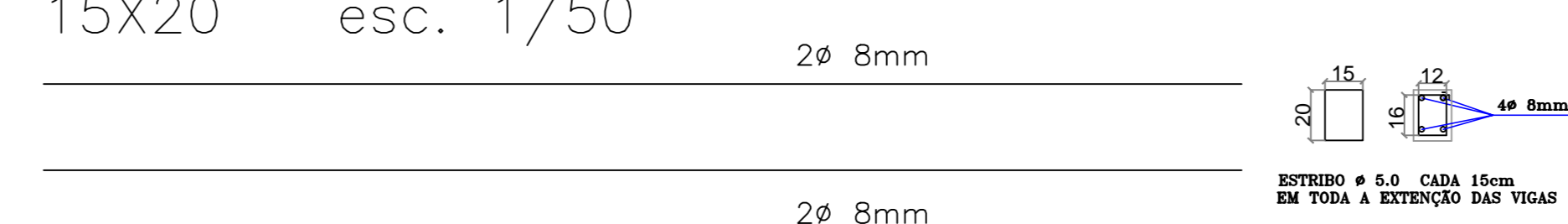
VIGA BALDRAME
15X30 esc. 1/50



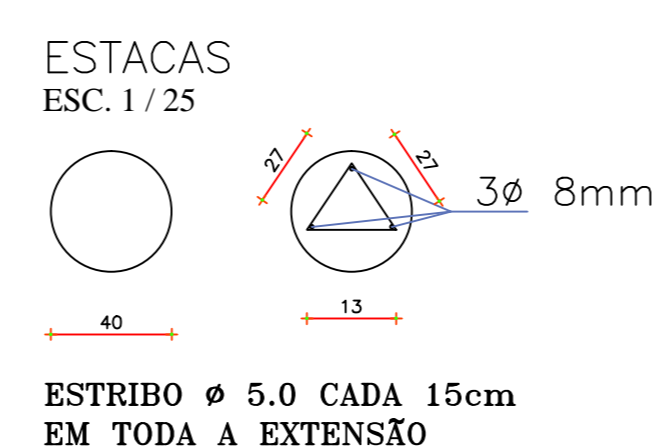
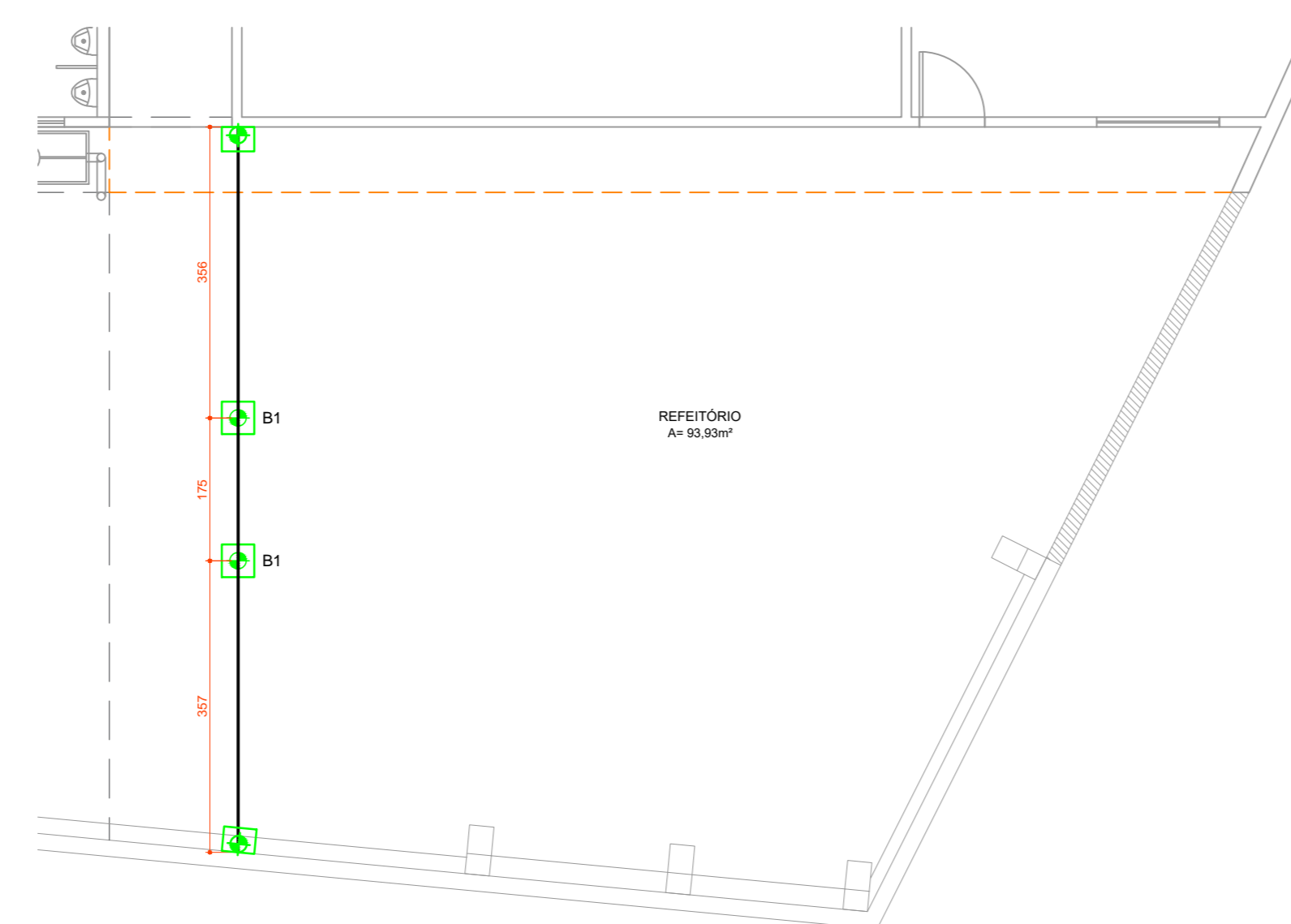
VIGA CINTA
15X20 esc. 1/50



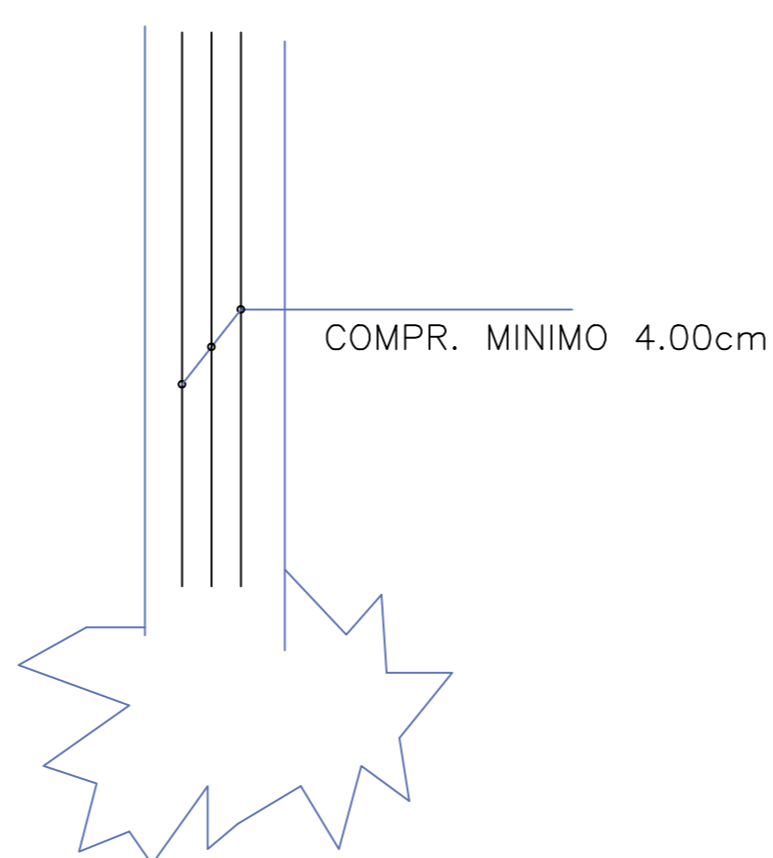
VERGA CONTRA VERGA
15X20 esc. 1/50



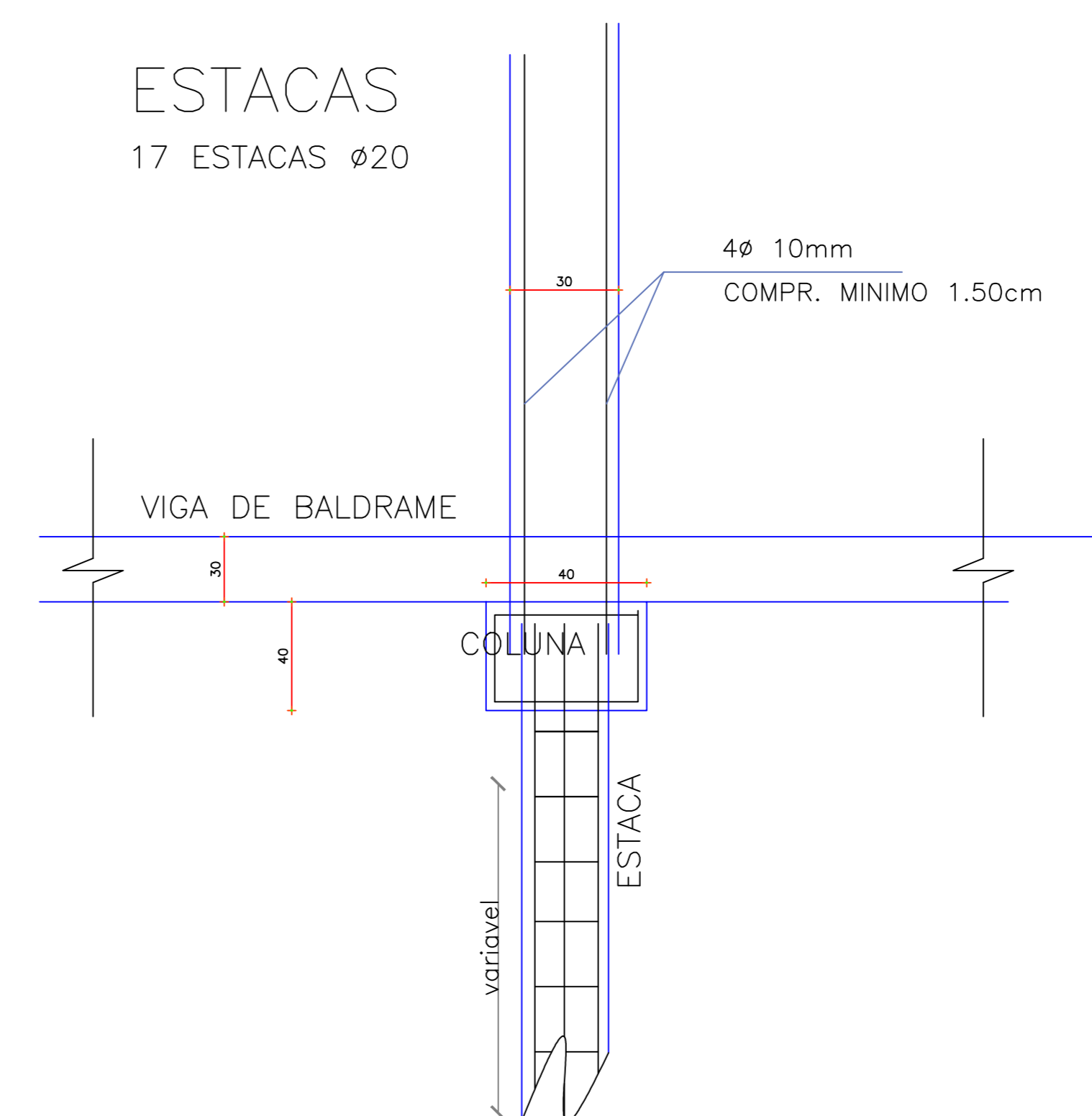
PLANTA ESTRUTURAL REFEITÓRIO
ESCALA 1/75



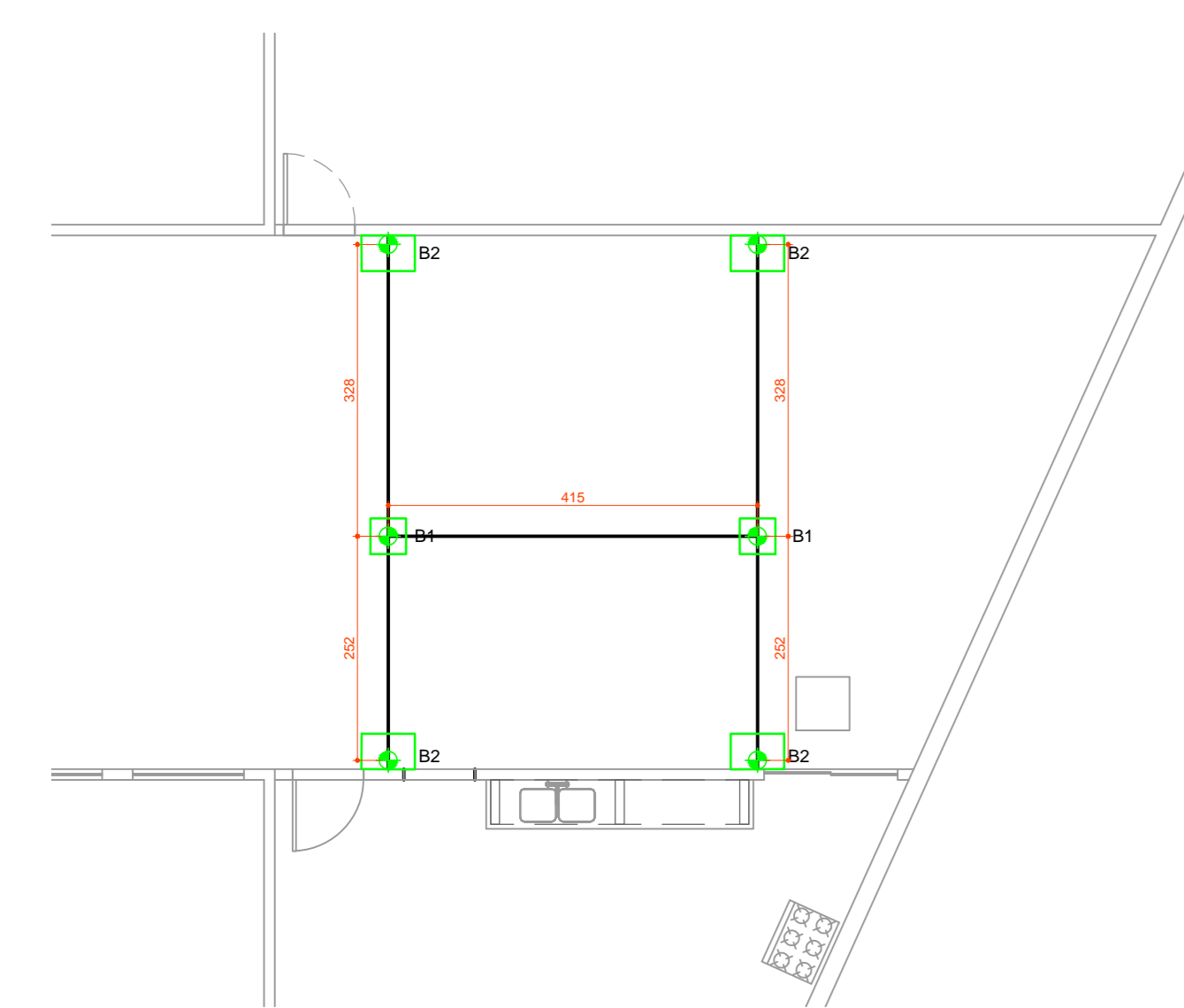
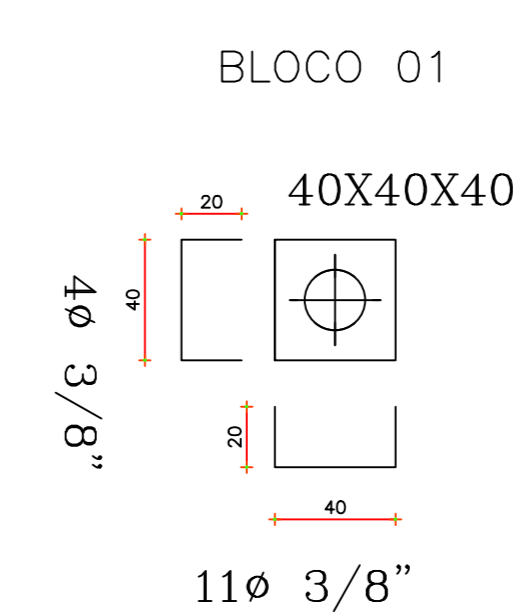
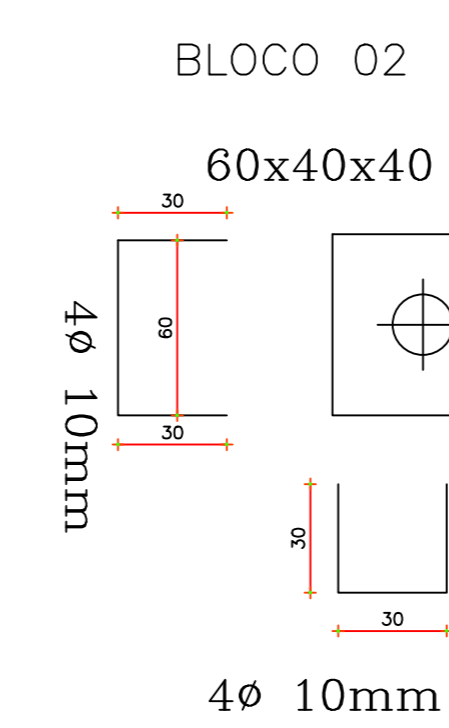
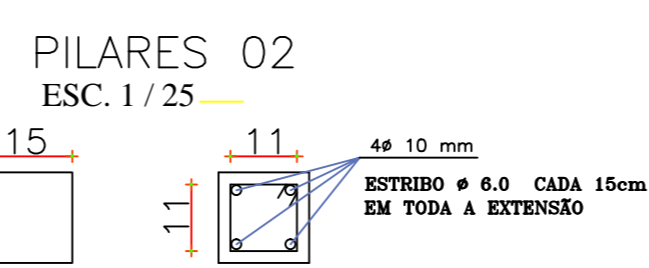
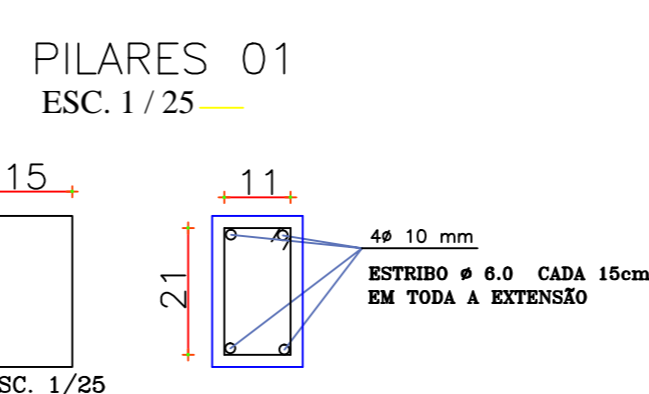
17 ESTACAS Ø20



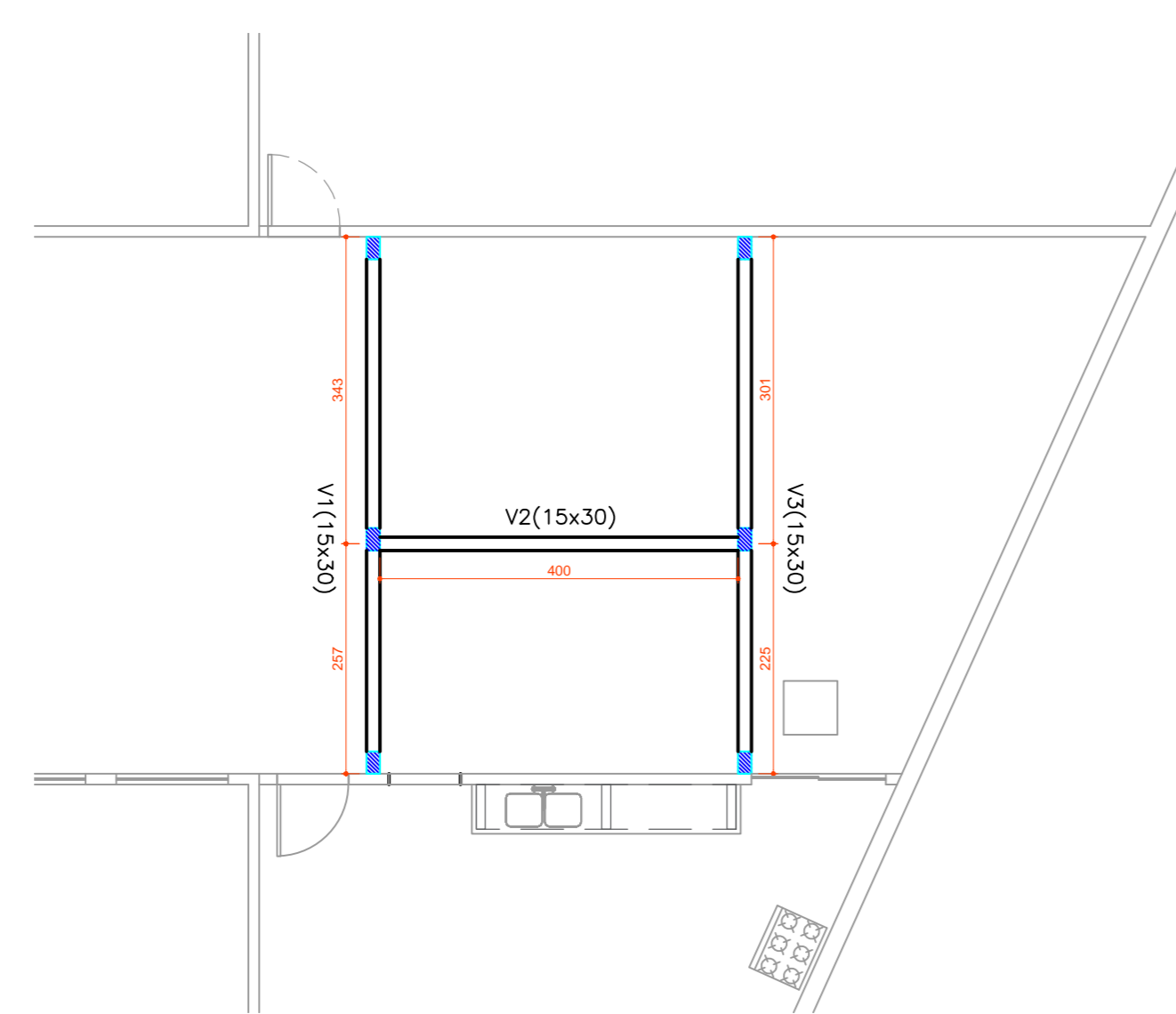
ESTACAS
17 ESTACAS Ø20



DETALHE DOS BLOCOS
ESC. 1/25



PLANTA ESTRUTURAL DESPENSA E LAVANDERIA
ESCALA 1/75



<p>PREFEITURA MUNICIPAL DE PORTO UNIÃO - SC</p>			
<p>OBRA: Reforma e Ampliação do Núcleo de Educação São Bernardo do Campo</p>			
<p>LOCAL DA OBRA: Rua Frei Canisio, 64 - Conj São Bernardo do Campo, Bela Vista, Porto União</p>			
<p>DETALHE ESTRUTURAL</p>		<p>ÁREA TOTAL: Existente: 1037,12 m² Ampliação: 357,84 m²</p>	
<p>PROFESSOR RESPONSÁVEL PELO PROJETO: Cáudio Tigner de Souza Engenheiro Civil OAB/SC nº 20853</p>		<p>PROJETO: Arg. Ampliação</p>	
<p>DATA: Fevereiro/21</p>		<p>MUNICÍPIO: Porto União</p>	
<p>PROFESSOR: Martha Gaebler</p>		<p>ESCALA: indicada</p>	
<p>ESTADO: Santa Catarina</p>		<p>09/09</p>	